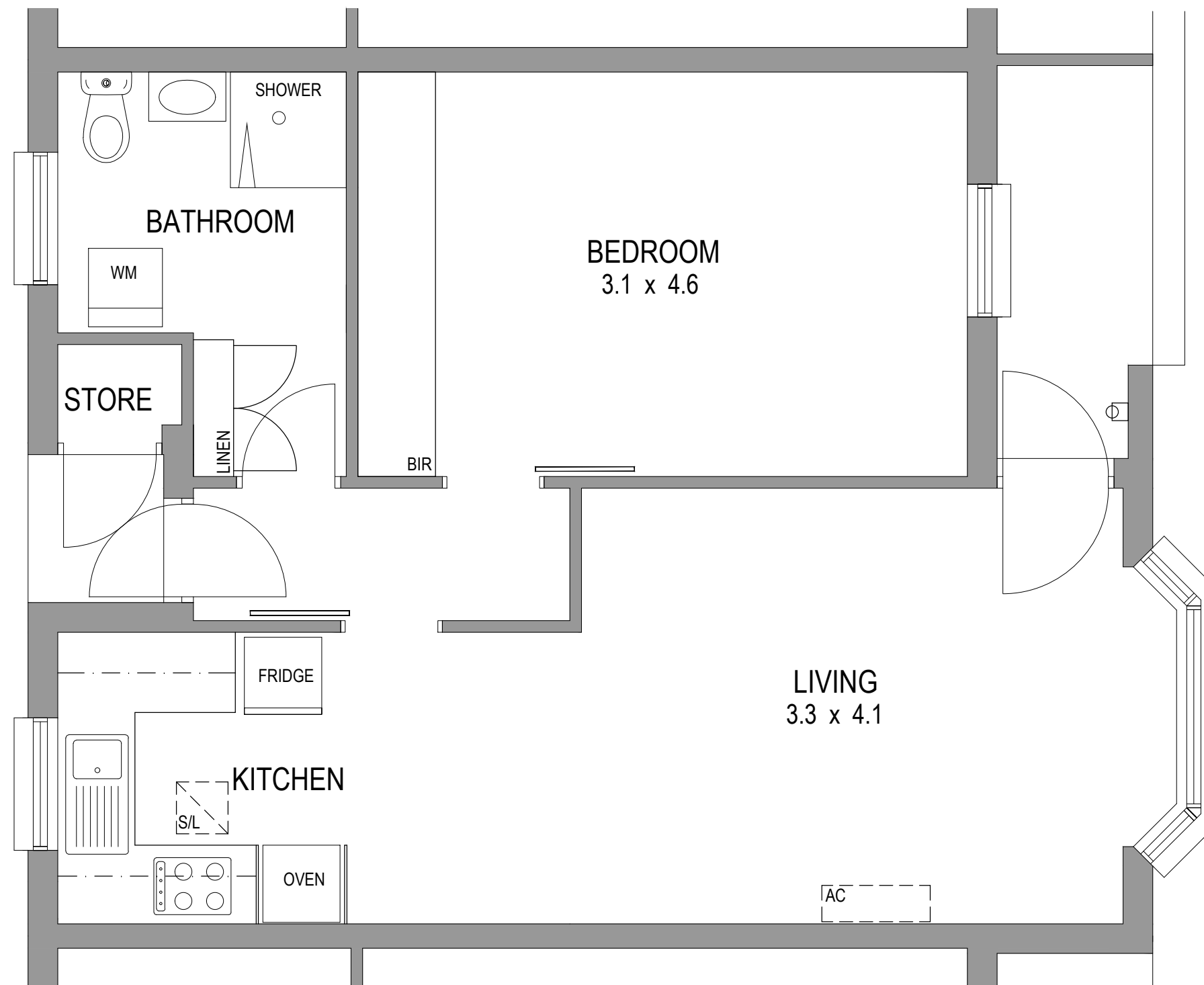


MOSTYN
COURT

SITE **064**
UNIT **002**

66 PRINCES ROAD
TORRENS PARK /
19 LORRAINE AVENUE
MITCHAM

RESIDENT UNIT PLAN



NOTE: ALL ROOM DIMENSIONS ARE APPROXIMATE ONLY. DO NOT SCALE

PLOT SCALE 1:60 @ A3
PLOT DATE 07 / 04 / 22 3:22pm
DRAWN BY RTR
TITLE RESIDENT UNIT PLAN
DRAWING NO. 064 - 002 RUP
SHEET NO. 1 of 1
VERSION 1.0



ask ech ECH Inc
174 Greenhill Road
Parkside SA 5063
Telephone 1300 275 324
Facsimile (08) 8407 5130
www.ech.asn.au

independent living units | community services

This drawing remains the exclusive property of ECH Inc and must not be copied or reproduced wholly or in part in any form without the written permission of ECH